

OWNER'S MANUAL/SHOREMASTER 3024 PONTOON LIFT


WEIGHT CAPACITY: 3000 lbs.

TOP RACK LENGTH: 24'

EFFECTIVE 10-25-94

Before attempting to operate the lift, read this owners manual thoroughly.

SHOREMASTER



PLEASE KEEP THIS FOR FUTURE REFERENCE

When assembling any product, the proper safety precautions must be observed. Please make sure that during assembly all the parts are on a flat, clean work area to minimize the chance of accidents. Also, DO NOT allow younger children in the area when assembling, installing, or removing the lift. ALWAYS wear protective eyewear and clothing when assembling, installing, and removing the lift. REMEMBER, ALWAYS PUT SAFETY FIRST!!!

The following parts list, operating/safety procedures, assembly instructions and maintenance schedule is for your ShoreMaster boat lift. Please read through the manual entirely before attempting to operate the lift. Pay close attention to all safety related material. If you have any questions contact your dealer or call ShoreMaster toll-free 1-(800) 328-8945.

** IMPORTANT **

NEVER exceed the listed weight capacity of a boat lift. Doing so will invalidate the warranty, and could result in damage to the lift and/or boat, and serious personal injury or death.

REMEMBER, your boat weight includes: boat, motor, gas, battery, oil, gear, etc.!!!

Grease pulleys and winch when it is new and every spring and fall. Not doing so will invalidate your warranty.

3024 PONTOON LIFT HARDWARE LIST

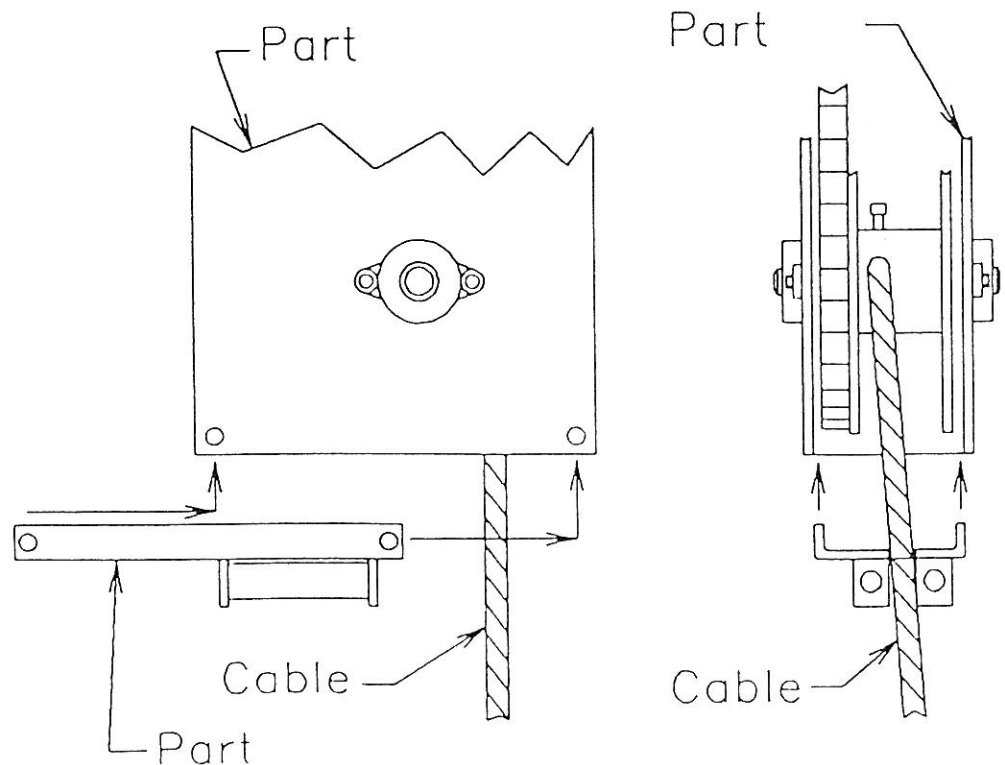
QUANTITY	DESCRIPTION
1	7/16" X 7" U-BOLT
4	3/8" X 4" U-BOLTS
2	3/8" X 5 1/2" MACHINE BOLTS
30	3/8" X 2 3/4" MACHINE BOLTS
25	3/8" X 3" MACHINE BOLTS
18	1/2" X 3 1/2" MACHINE BOLTS
6	5/16" X 2 1/2" CARRIAGE BOLTS
2	1/2" X 1 1/4" SQUARE HEAD SET SCREW
69	3/8" NUTS
2	7/16" NUTS
18	1/2" LOCK NUTS
2	1/2" SQUARE HEAD NUTS
6	5/16" NUTS
2	7/16" WASHERS
13	3/8" WASHERS
2	1/4" X 2 1/4" MACHINE BOLTS STAINLESS STEEL
2	1/4" LOCKNUTS STAINLESS STEEL
4	3/8" X 3 1/2" CARRIAGE
3	BRASS PULLEY W/3/8" 2-LINK CHAIN
2	BRASS PULLEY W/3/8" 3-LINK CHAIN
2	#1 BLUE CAPS
6	#4 BLUE CAPS
2	PONTOON STOP BRACKETS
2	1000# CRADLE RUBBERS
4	CONNECTING PLATES
1	WHEEL EXTENSION TUBE
1	WHEEL NUT EXTENSION
4	LIFT LEG ADJUSTABLE POCKETS
1	1/4"X30' CABLE W/ALUM EYE & 2 ALUM SLEAVES
1	2503 D.L. WINCH
1	D.L. WHEEL KIT
1	ROPE CLAMP
1	WINCH BRACE
1	INSTRUCTION SHEET
2	ROLLERS 2" X 6"
2	ROLLER TUBES

ADDENDUM TO SHOREMASTER CANTILEVER INSTRUCTIONS

3/07/96

#1 Use the four pins and pin clips in your bolt bag to attach your lift legs. The attached assembly instructions may not indicate that we are now offering pins and pin clips to attach lift legs. Substitute the pins and clips for the bolts and nuts shown in the instructions.

#2 If this lift uses a ShoreMaster winch, a cable guide is now offered as a standard component. This does not apply to lifts using Dutton Lainson winches. This new addition may not be indicated in the attached instructions. This guide should be attached to the winch as shown below.



**** DO NOT ATTEMPT TO OPERATE LIFT WITHOUT FIRST STUDYING THE FOLLOWING ****

OPERATING & SAFETY

1. After assembly (and yearly), check to be sure that all nuts and bolts are tightened as required. Check pulley sheaves, cables, winch, and lift rack to see that they are all operating freely and there are no signs of wear or possible failure.
2. ALWAYS wear protective clothing and eyewear when assembling, installing, or removing the lift and/or lift accessories.
3. Make all possible adjustments to lift legs, cradles, EPU's and other accessories before installing lift in the water. Adjusting lift parts while in the water is more difficult and potentially more dangerous. NEVER make any adjustments with the boat in the lift.
4. Test to see that the winch is working properly by winding up cable on spool by turning the wheel clockwise. Hand guide the cable onto the winch spool the first few times the lift is raised so the cable wraps uniformly.
5. The winch must be making a clicking sound when raising the boat. A brake will activate automatically when you stop, allowing you safe and controllable use. NEVER lift the ratchet pawl as a means to lower the lift. To lower the lift, please turn the wheel counter-clockwise. When lifting your lift and you turn the wheel and the ratchet is not clicking, you are turning the wheel backwards or your brake mechanism is not working. Rapid spin down may occur. DO NOT attempt to stop if this occurs.
6. ***** IF AT ANYTIME THE LIFT WHEEL SPINS UNCONTROLLABLY DO NOT ATTEMPT TO STOP IT! DOING SO COULD RESULT IN SERIOUS INJURY OR DEATH *****
7. Never attempt to operate lift unless winch is functioning properly. **IMPORTANT: ** IT IS RECOMMENDED THAT ANYONE OPERATING THE LIFT FIRST THOROUGHLY STUDY THE OWNERS MANUAL.** Study winch maintenance, instructions and safety tips located in your owners manual.
8. Never allow rack to be in a fully lowered position while supporting the weight of your boat (winter storage, etc.) Damage may result to the rack (this applies to cantilever models only).
9. Be sure that the boat is properly balanced and centered on the lift before attempting to raise the rack. Generally, the boat should be as far forward in lift as possible for proper balance.
10. It is recommended that the lift be operated in at least 3' of water. This will allow for easier raising of the lift and less strain on the winch (cantilever models only).

11. Do not raise the rack past the recommended height (over center on a cantilever). Doing so could damage the lift or cause the winch or cable to break.
12. DO NOT lower the rack to the point where the cable begins to develop slack. Doing so may allow the cable to jump the spool and/or pulleys and cause personal injury and/or damage to the cable and winch.
13. If at anytime there is more than the normal resistance when operating the wheel and winch, do not attempt to force it. Lower the lift and check for possible problems with winch or other lift parts.
14. NEVER exceed the recommended weight capacity of the lift. Doing so will invalidate your warranty and could damage the lift. Improper loading could cause serious injury or death.
15. Pull drain plug from boat when raised on the lift and not in use. Failing to do so may result in water accumulating and the load exceeding recommended lift capacity.
16. Lock your wheel and rack in place by chain and padlock when unattended. This will help prevent theft or possible spin down of wheel and rack.
17. Never allow anyone (especially children) on, in, under, or near the lift when in a raised position or when being raised or lowered. You may cradle the boat when loading and unloading passengers. This is the point at which your boat is not supported by the lift, but it is prevented from lateral movement during loading or unloading of passengers.

WINCH INSTRUCTIONS, SAFETY & MAINTENANCE

WINCH INSTRUCTIONS

Thread the wheel on to the drive shaft turning clockwise until a clicking sound is heard and the rack begins to raise. After the wheel is in firm contact with the brake pads and ratchet gear, install the wheel kit to prevent the wheel from backing off the winch driveshaft (step 6). To prevent fraying or binding, uniformly wind cable on to winch hub. You may need to hand guide the cable onto the spool the first few times to make sure it wraps uniformly. When doing this please wear protective clothing.

Wind cable off the hub by turning the wheel counter-clockwise (no noise will be produced). To make sure the wheel will remain in position when you let go of the wheel, turn the wheel clockwise so you hear a clicking sound. Sufficient load must be applied to lift for brake mechanism to activate properly, otherwise turning the wheel will only remove the wheel from the shaft. NEVER raise the ratchet pawl as a means to lower the lift. Always satisfy yourself that the winch brake is holding the load before releasing the wheel. IF IT IS NOT, RAPID SPIN DOWN COULD OCCUR. DO NOT ATTEMPT TO STOP WHEEL IF UNCONTROLLED RAPID SPIN DOWN SHOULD OCCUR!!!

If at anytime the wheel turns up or down with great difficulty, the brake may be sticking. The brake pads may be worn or not smooth enough to allow brake to release. It is important that the wheel and shaft threads are greased periodically. DO NOT, however, grease any part of the brake mechanism.

* IMPORTANT *

NEVER wind cable off the winch hub so that excess slack occurs in the cable. Excess slack in the cable could allow the cable to slip off the winch hub or pulleys and cause damage to your lift or winch and may cause personal injury.

WINCH SAFETY

The winch for this lift is strickly for watercraft lifting operations. It is not to be used as a method of supporting or transporting people, or for loads over areas where people may be present.

Check winch for proper operations on each use. If it is damaged in anyway do not attempt to operate.

Never allow children or those unfamiliar with the operation of the lift to use it.

NEVER exceed recommended lift capacity. Personal injury may result.

Never apply load to winch with cable fully unwrapped. There should be at least four full turns of cable on the hub.

NEVER raise the ratchet pawl as a means to lower the lift. Doing so may result in serious injury.

WINCH MAINTENANCE

It is recommended that the winch be inspected periodically (at least twice yearly). Necessary preventive maintenance is required for maximum performance of the winch.

1. Remove all the load from the lift. Then turn down until the cable BEGINS to slack. Remove wheel kit and wheel from shaft.
2. Remove brake pads and ratchet gear from shaft. Sand off any rust or corrosion on these parts. DO NOT grease the brake pad mechanism.
3. Replace brake pads and ratchet gear on the shaft. One brake pad should be on each side of the ratchet gear. Replace wheel and wheel kit.

VERY IMPORTANT:

4. Check to be sure that ratchet pawl and spring (if used on your lift) are aligned on the ratchet gear. You can do this by turning the wheel clockwise. A clicking sound should be heard. If it is not functioning properly, check to see that your spring (if used on your lift) is in place. New ShoreMaster models with capacities of 2500# and higher manufactured after January 1992 do not use springs on the ratchet pawl.
5. Remove the cover and check to see that gears, shafts and chains are attached and turning freely. Grease all bearings and gear teeth with good wheel bearing grease.
6. Replace winch cover. Check mounting of winch to be sure that it is secure and properly aligned. Also, check cable to make sure it is secure and there is no abnormal stiffness or broken strands.
7. Replace any worn or broken parts with authorized ShoreMaster parts available at your local dealer or ShoreMaster.

ELECTRIC POWER UNIT SAFETY

** WARNING **

1. ALWAYS turn off MAIN POWER SUPPLY when moving, swimming, or working on or around the lift.
2. It is recommended that power be shut off and/or motor unplugged when not in use to preserve the life of the motor. This will also prevent unauthorized use of the motor and lift.
3. Proper care should be exercised in regard to wires which are exposed to wave or wind oscillations. If wires are exposed, appear worn, or are weathered, turn off the MAIN POWER SUPPLY and get the unit repaired immediately. Kinks or breaks in wire could occur, resulting in **SERIOUS INJURY OR DEATH!!!**
4. It is recommended that an electrician do the installation and final inspection of this electric power unit. If at any time the unit is not operating properly, shut down the MAIN POWER SUPPLY and have it inspected by authorized service personnel.
5. NOT COMPLYING WITH THE ABOVE RECOMMENDATIONS MAY INVALIDATE THE WARRANTY OR RESULT IN PERSONAL INJURY OR DEATH.
6. When operating the electric power unit, make sure the winch driveshaft is turning clockwise when lifting the boat up out of the water and that the ratchet pawl is making a clicking sound. This will allow the winch to break properly.
7. If you have any questions concerning the installation, operation, or safety precautions of your electric power unit, please call ShoreMaster at 1-800-328-8945.

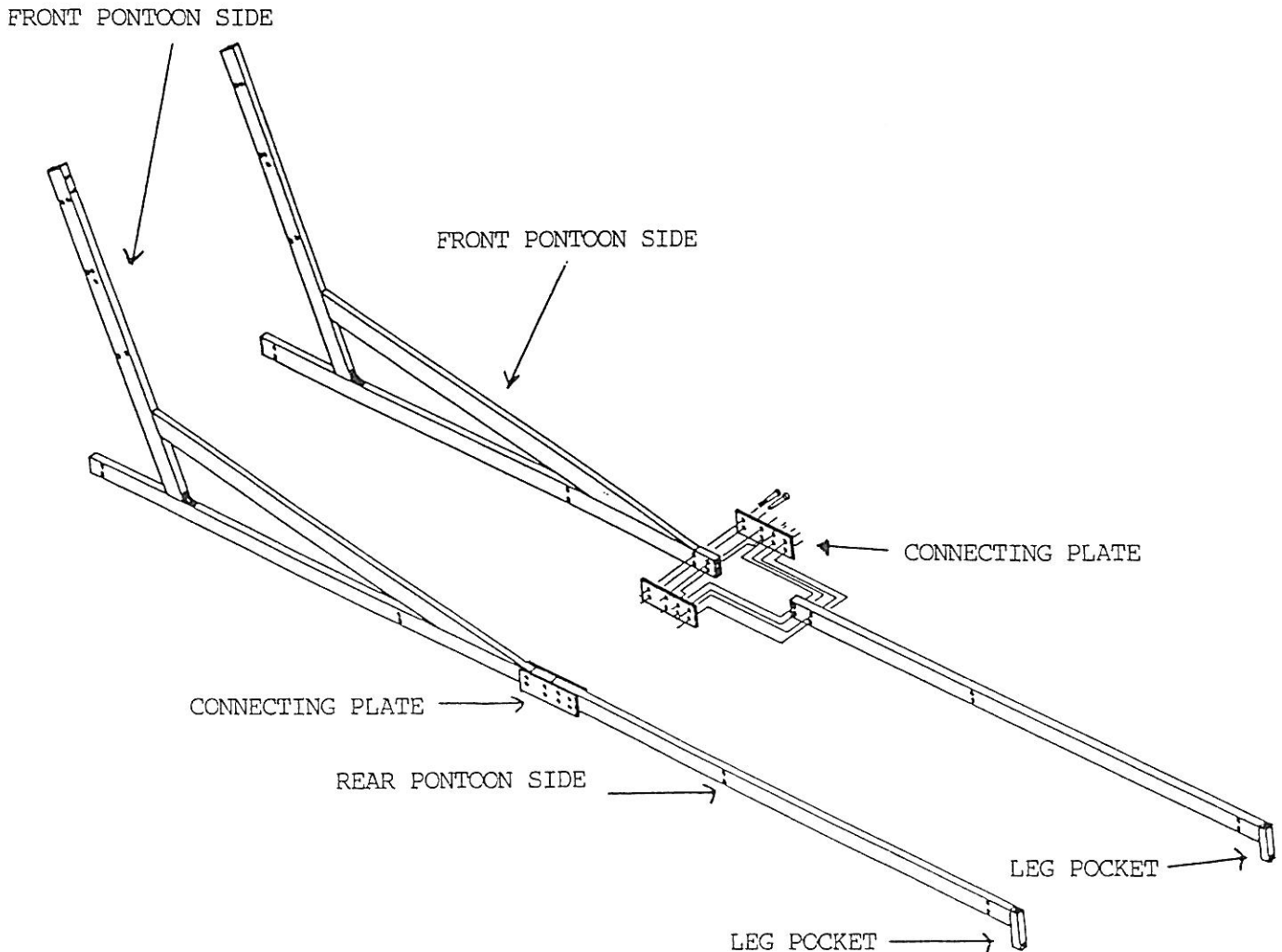
***** GREASE WINCH DRIVESHAFT THREADS AND CHAINS AT LEAST TWICE A YEAR!! PREFERABLY EACH FALL BEFORE STORAGE AND EACH SPRING BEFORE USE. *****

STEP 1

** IMPORTANT **

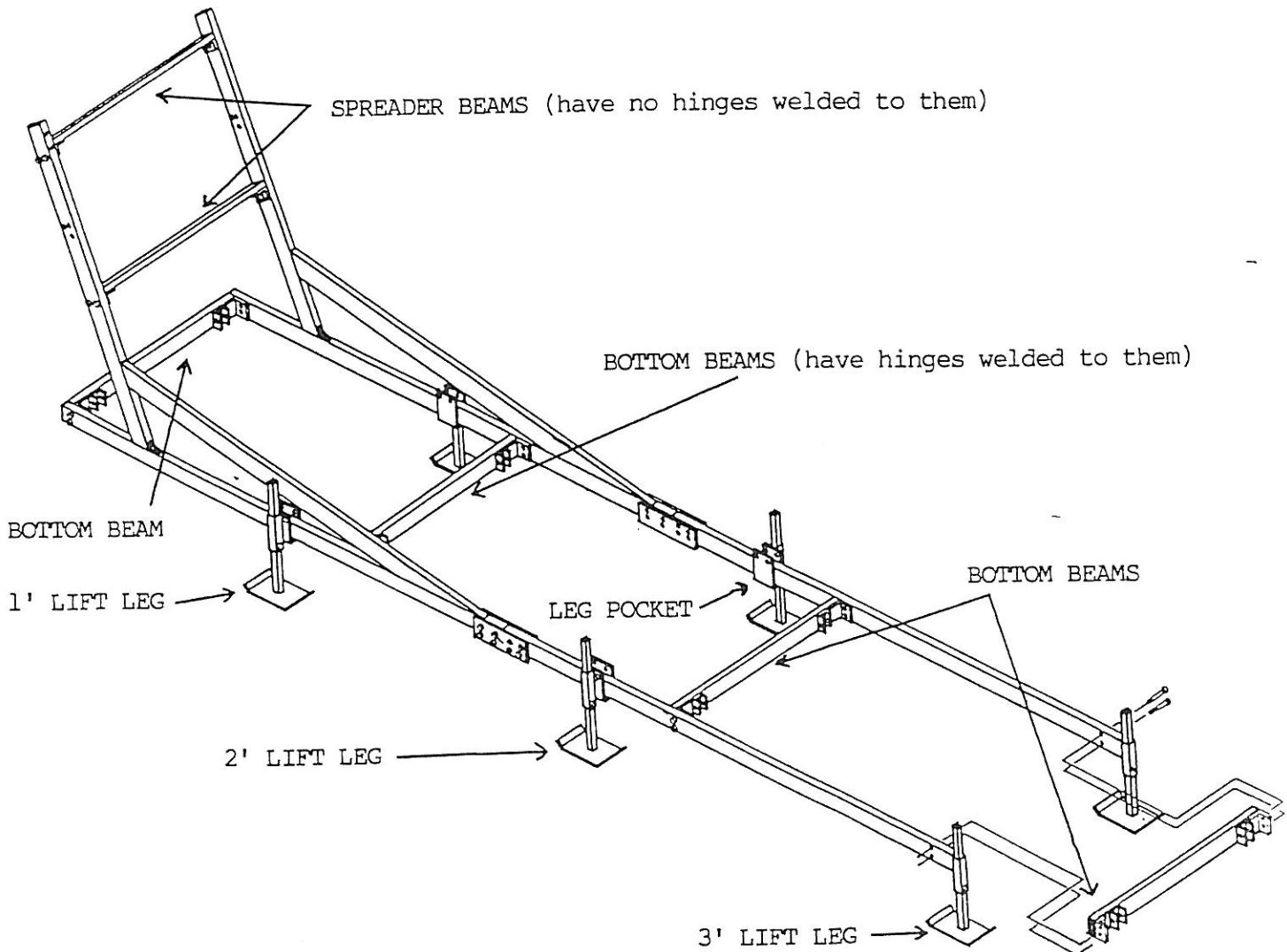
DO NOT FULLY TIGHTEN NUTS & BOLTS UNTIL YOU ARE FINISHED WITH ASSEMBLY!

- (A) PLACE EACH FRONT & REAR PONTOON SIDE IN POSITION AS SHOWN IN THE PICTURE. EACH SIDE IS INTERCHANGABLE, HOWEVER, MAKE SURE THE LEG POCKETS IN THE REAR PONTOON SIDES EXTEND BELOW THE REAR PONTOON SIDE AS SHOWN IN THE PICTURE.
- (B) CONNECT THE FRONT & REAR PONTOON SIDES TOGETHER USING THE CONNECTING PLATES AS SHOWN. PLACE A FRONT & REAR SIDE TOGETHER BETWEEN (2) CONNECTING PLATES AND BOLT TOGETHER USING 3/8" X 3" MACHINE BOLTS. PLEASE MAKE SURE THE BOLT HEADS ARE ON THE OUTSIDE OF THE LIFT.



STEP 2

- (A) BOLT THE (4) BOTTOM BEAMS IN PLACE AS SHOWN IN THE PICTURE USING 3/8" X 2 3/4" MACHINE BOLTS. MAKE SURE THE BOLT HEADS ARE ON THE OUTSIDE OF THE LIFT.
- (B) BOLT THE (2) SPREADER BEAMS IN PLACE AS SHOWN IN THE PICTURE USING 3/8" X 2 3/4" MACHINE BOLTS.
- (C) ATTACH THE LEG POCKETS TO THE BOTTOM OF THE LIFT SIDES AS SHOWN USING 3/8" X 3 MACHINE BOLTS. START WITH ALL THE LEG POCKETS EVENLY SPACED. THEY CAN BE MOVED LATER WHEN YOU SEE HOW THE WEIGHT OF YOUR PONTOON BOAT IS BEING DISTRIBUTED ON THE LIFT.
- (D) BOLT THE LIFT LEGS IN PLACE IN THE LEG POCKETS AS SHOWN USING 3/8" X 2 3/4" MACHINE BOLTS.

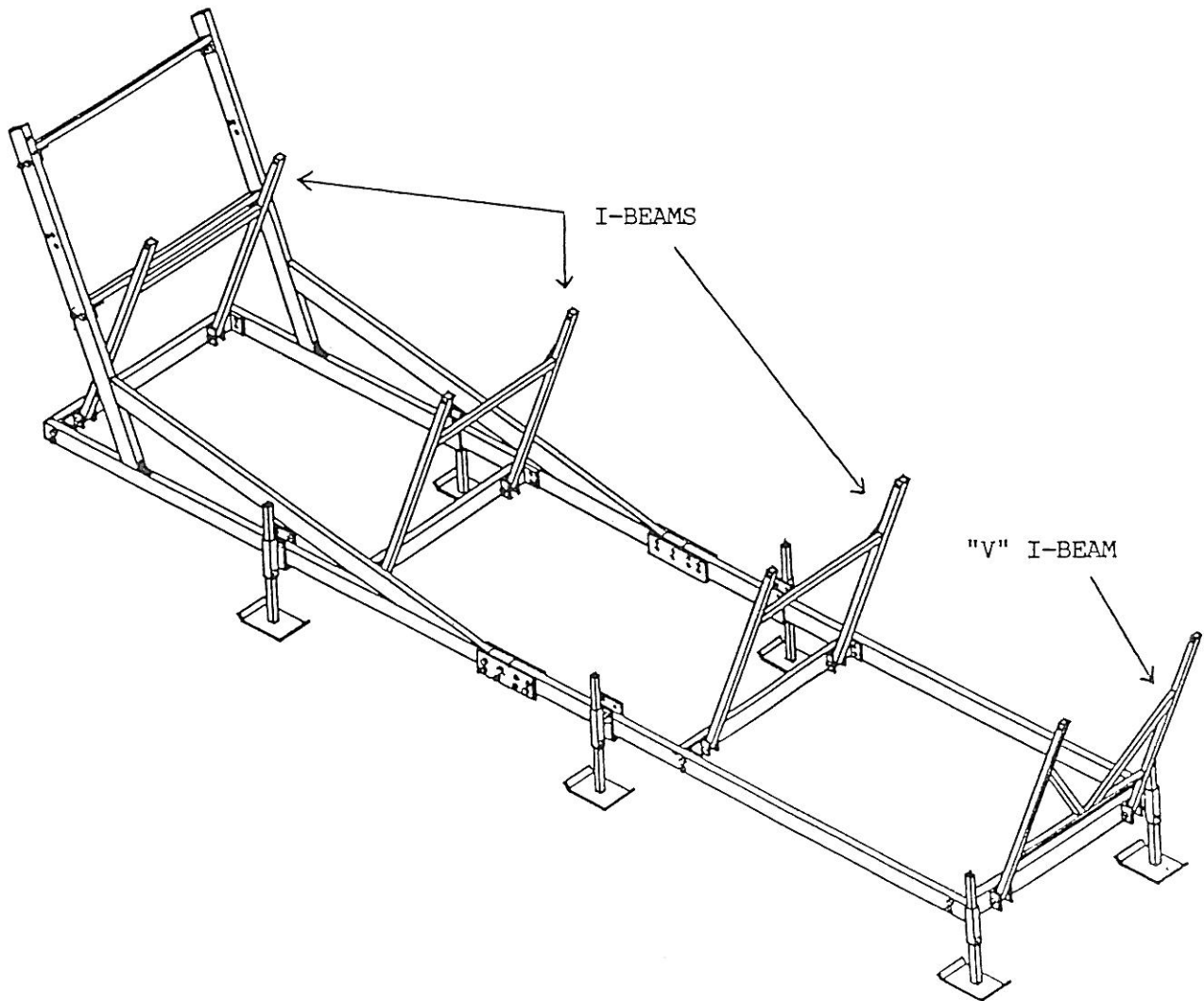


STEP 3

- (A) BOLT THE I-BEAMS TO THE HINGES ON THE BOTTOM BEAMS AS SHOWN IN THE PICTURE USING 1/2" X 3 1/2" MACHINE BOLTS & 1/2" LOCK NUTS. DO NOT OVERTIGHTEN THE LOCK NUTS BECAUSE THE I-BEAMS NEED TO BE ABLE TO MOVE FREELY!!!

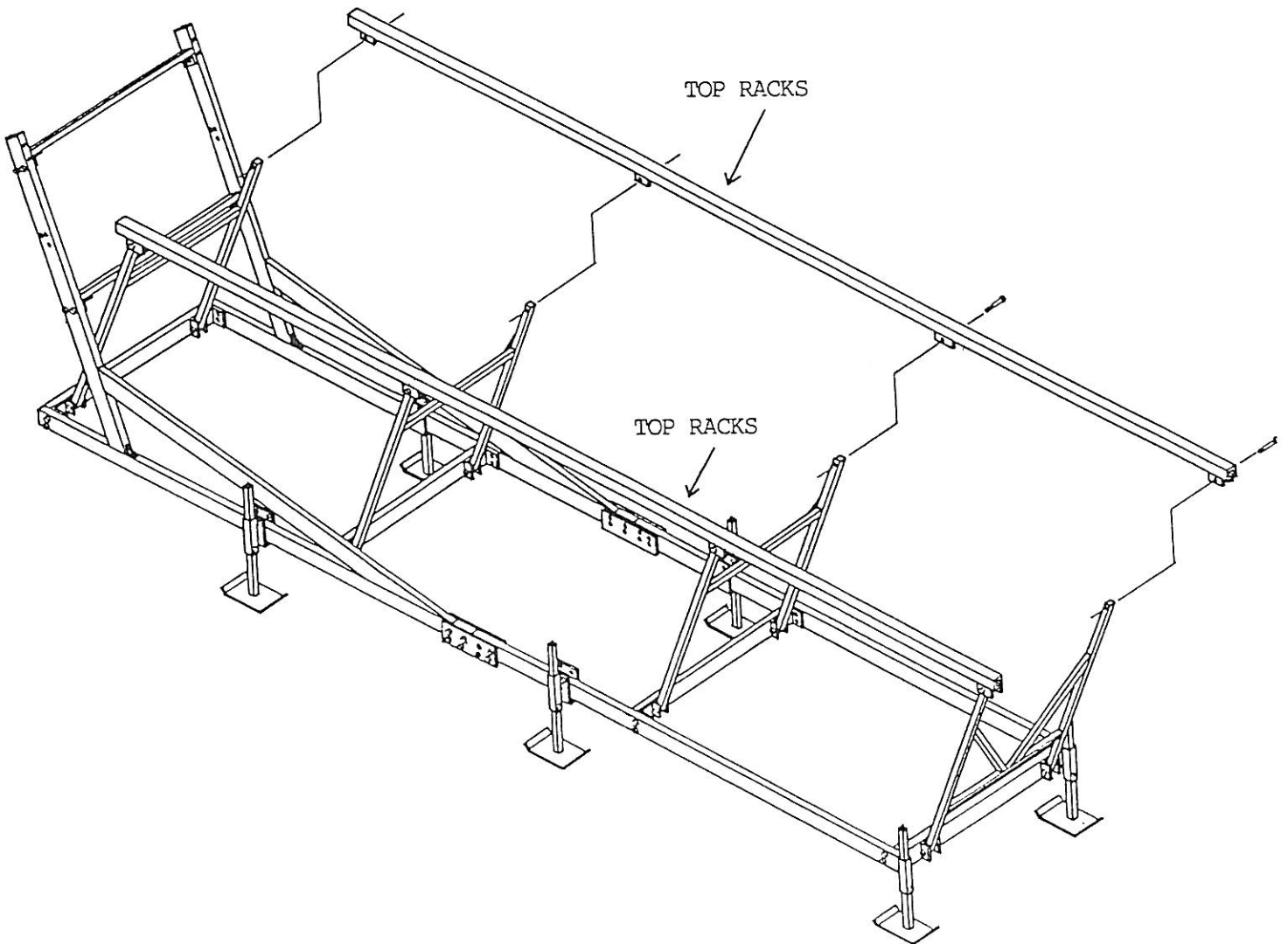
** NOTE **

THE "V" I-BEAM IS THE REAR I-BEAM!! THE OTHER I-BEAMS ARE INTERCHANGABLE.



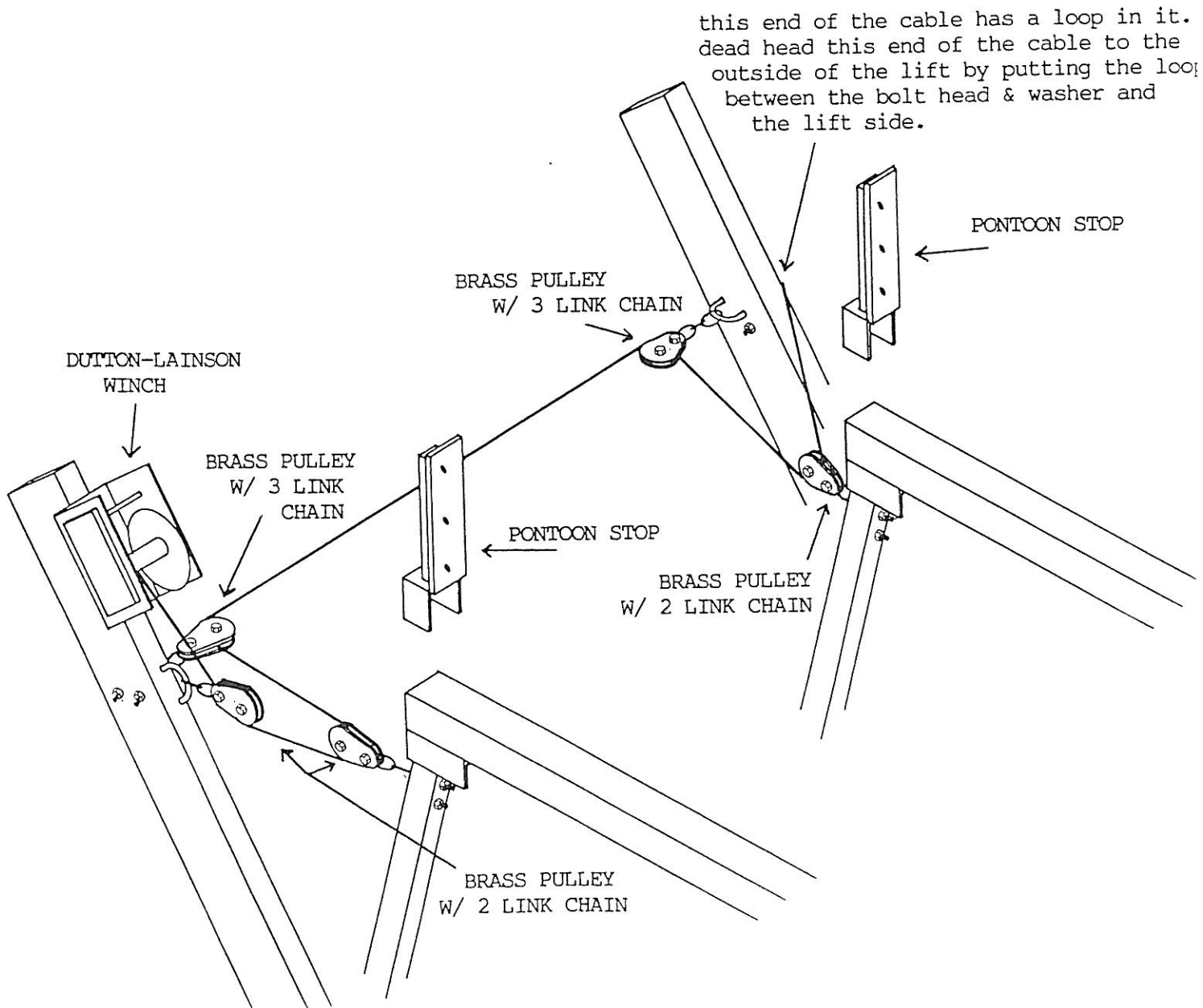
STEP 4

- (A) ATTACH THE (2) 24' TOP RACK BEAMS TO THE TOP OF THE I-BEAMS USING 1/2" X 3 1/2" MACHINE BOLTS & 1/2" LOCK NUTS. DO NOT OVERTIGHTEN THE LOCK NUTS BECAUSE THE TOP RACKS NEED TO BE ABLE TO MOVE FREELY!!



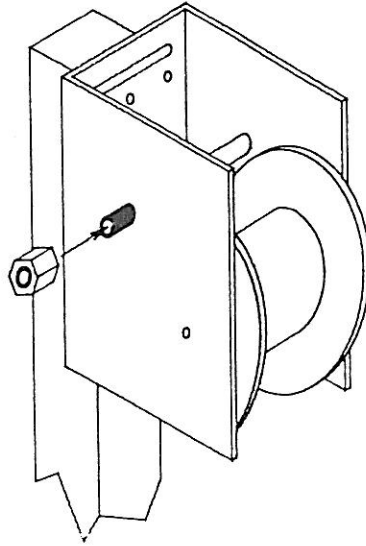
STEP 5

- (A) Attach the winch to the lift upright using 3/8" X 5 1/2" machine bolts and washers. Make sure the winch is as vertical as possible. Then attach the cable to the winch spool using the rope clamp to secure it. On the winch spool, there is a round and square hole. Take the end of the cable without the loop and put it through the round hole from the inside out so there is about 6" of the cable on the outside of the spool. In the square hole, insert a 1/4" X 1/2" carriage bolt so the head of the bolt is on the inside of the winch spool. Then put 1/2 of the rope clamp on the bolt. Then take the cable and loop it around the bolt. Then take the other 1/2 of the rope clamp and put it on the bolt. Then making sure the cable is between the rope clamp, secure in place using a 1/4" nut.
- (B) USE WASHERS WITH ALL U-BOLTS
- (C) THE PONTOON STOPS WILL SET SCREW IN POSITION WHERE YOU WANT THEM ON THE FRONT END OF THE TOP RACKS. THE PONTOON STOPS WILL PREVENT YOUR PONTOON FROM GOING TO FAR FORWARD ON THE LIFT ONCE YOU ATTACH THEM WHERE YOU WANT.
- (D) THE U-BOLT THAT ATTACHES DIRECTLY BELOW THE WINCH IS THE 7/16" X 7 U-BOLT. ALL THE OTHER U-BOLTS ARE 3/8" X 4" U-BOLTS.

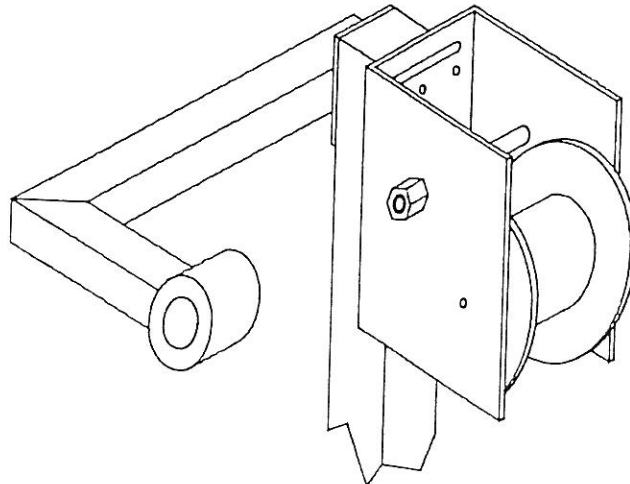


STEP 6

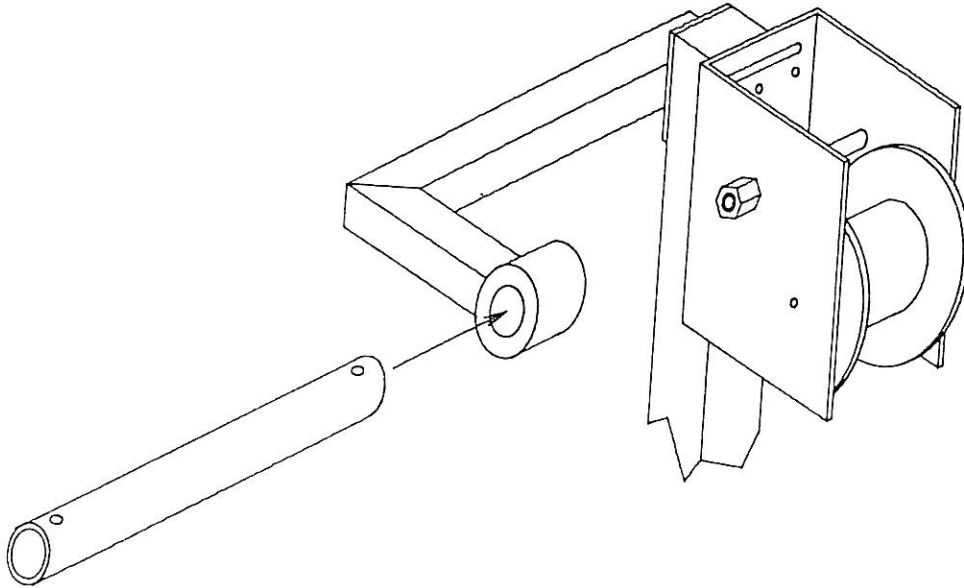
- (A) THREAD THE WHEEL NUT EXTENSION ONTO THE WINCH DRIVESHAFT. THREAD THE WHEEL NUT EXTENSION UNTIL YOU HEAR THE WINCH RATCHET UP.



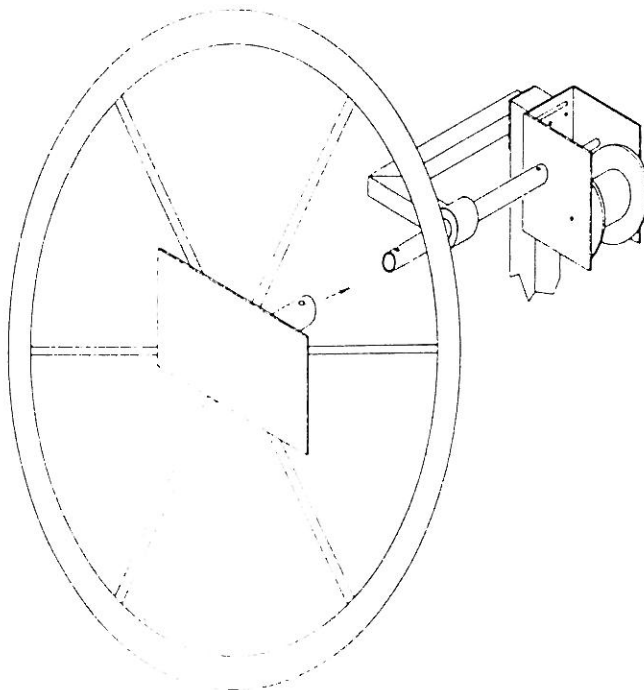
- (B.) ATTACH DRIVE SHAFT GUIDE TO UPRIGHT USING EXISTING WINCH BOLTS.



- (C.) THEN ATTACH THE WHEEL KIT TO THE WINCH DRIVESHAFT. THE WHEEL KIT IS COMPRISED OF A SPACER, WASHER, AND LOCK BOLT. THE WHEEL KIT MUST BE ATTACHED FOR THE WINCH TO WORK PROPERLY. THE WHEEL KIT IS NOT SHOWN IN THIS PICTURE.
- (D.) SLIDE THE 2' WINCH DRIVESHAFT EXTENSION OVER THE WHEEL NUT EXTENSION AND SECURE IN PLACE USING SET SCREWS.



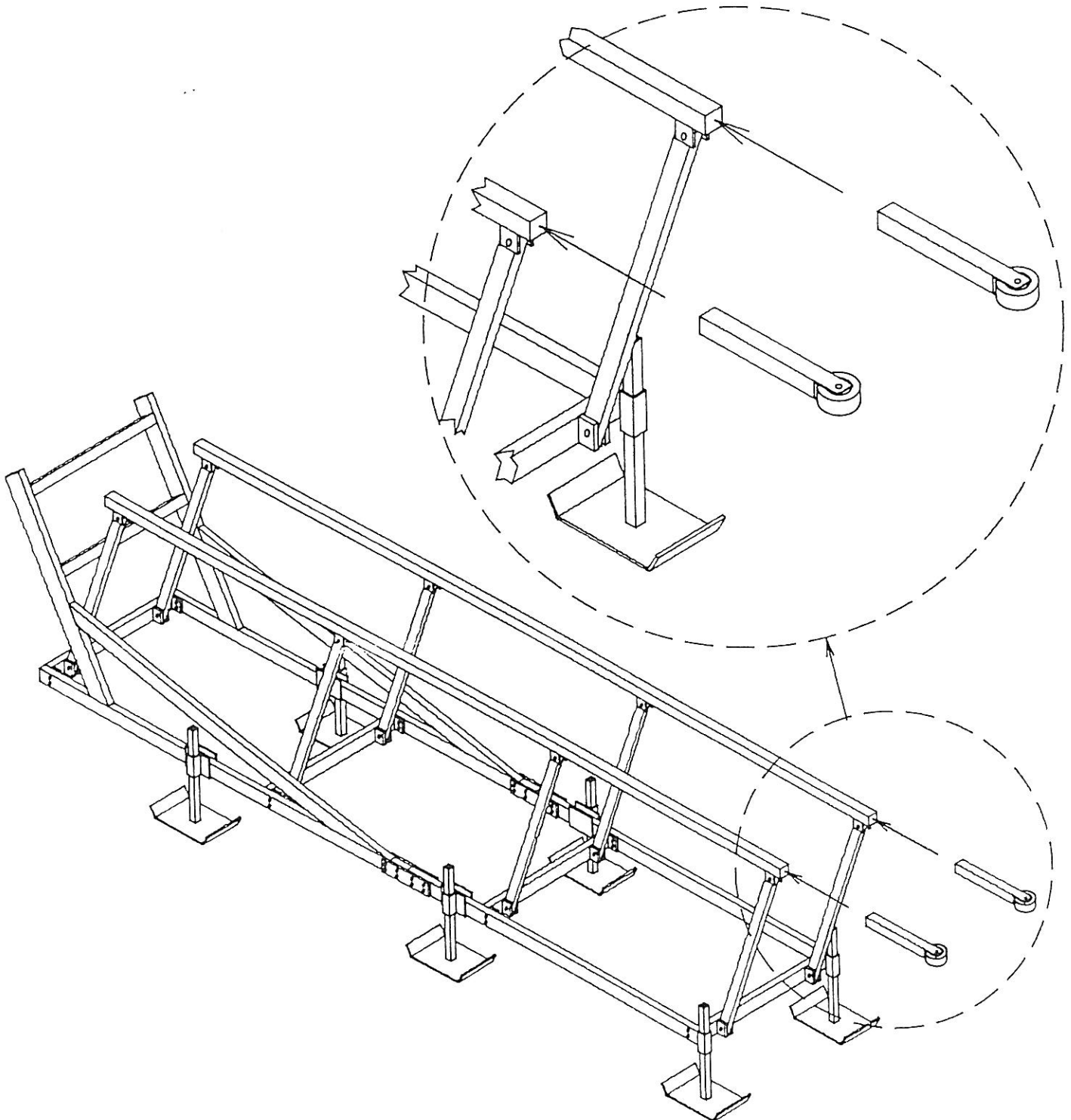
- (E.) THEN SLIDE THE LIFT WHEEL INTO THE 2' WINCH DRIVESHAFT EXTENSION AND SECURE IN PLACE USING SET SCREWS.



STEP 7

ATTACHING THE TWO ROLLER TUBER

- (A) ATTACH ROLLER WHEEL TO ROLLER TUBE USING A 1/2" x 3 1/2" CARRIAGE BOLT AND 1/2" LOCK NUT.
- (B) ATTACH ROLLER ASSEMBLY TO LIFT AS SHOWN. USE TWO 3/8" x 3 1/2" CARRIAGE BOLTS AND TWO 3/8" NUTS PER TUBE.



PARTS PRICE SHEET
B-2500 WINCH

<u>REF LETTER</u>	<u>PART NAME</u>
A	BASE ASSEMBLY
B	1" NEEDLE BEARING
C	INTERM DRIVE SHAFT ASSEMBLY
D	REEL BOLT
E	3/8" LOCKNUT (EACH)
F	OILITE BEARING (EACH)
H	5/8" NEEDLE BEARING
J	PRIMARY DRIVE SHAFT
K	GEAR COVER
L	SELF-TAPPING SCREW
M	HANDLE ASSEMBLY
N	9/16" NEEDLE BEARING
O	1/2" LOCKNUT (3)
P	ROPE SIDE SPACER
Q	20-TOOTH GEAR ASSEMBLY
R	SHORT DRIVE SHAFT ASSEMBLY
S	RATCHET PAWL SPACER
T	BRAKE RATCHET SPRING-OUTER
U	RATCHET PAWL
V	3/8" X 1-3/4" SHOULDER (BUSHING CAPS SCREW)
W	CARRIAGE BOLT
X	ROPE CLAMP
Y	1/4" HEX NUT
Z	REEL ASSEMBLY-3-1/8" HUB
AA	BRAKE RATCHET SPRING - INNER
BB	ASBESTOS BRAKE LINER (2)
CC	RATCHET WHEEL
FF	IDLER GEAR ASSEMBLY
GG	IDLER GEAR SHOULDER BOLT
JJ	COVER SCREWS (2)
KK	GEAR SIDE SPACER
PP	SPACER WASHER (2)
QQ	1/2" NEEDLE BEARING

PARTS PRICE SHEET (CON'T)
B-2500

<u>REF. LETTER</u>	<u>PART NAME</u>
RR	SPACER WASHER
SS	WASHER
TT	SPRING
UU	SHAFT EXTENSION
VV	RETAINER WASHER
WW	HEX BOLT
XX	3/8" FLAT WASHER
YY	NYLOK CAP SCREW

B 2503

